



Thanks to its long experience, GROUPE LAPROM offers you softwood timber that meets your current and future needs. The range of timber we sell involves high quality raw materials and exceptional complementary services.

The competitive advantages of GROUPE LAPROM are practically the outstanding quality of the goods and the total viable cost for our customers.

## Product description

### Technical sections

Species: spruce / fir

Joinery timber: moisture = dry 10-12% (+/- 2%)

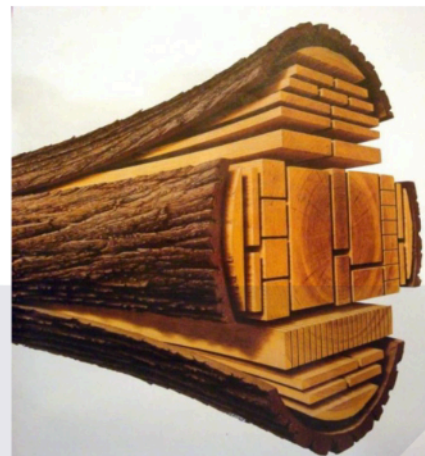
Construction timber: moisture = damped / freshly cut

Quality: Edged timber class AB (SF)

Cutting tolerances: - 1 / + 2 mm.

### Technical details

- 24 x 100 ; 120 ;140 ;160 ;180 ;200 x 3000 ; 4000 mm
- 48 x 100 ; 120 ;140 ;160 ;180 ;200 x 3000 ; 4000 mm
- 75 x 75 x 3000 ; 4000 mm
- 100 x 100 x 4000 ; 5000 ; 6000 mm
- 120 x 120 x 4000 ;5000 ; 6000 mm
- 150 x 150 x 4000 ;5000 ; 6000 mm



### Palletizing

Palletized in packages tied with PPR strips, 6 cm tacos, resinous slat in a row 10 mm thick.

Width 1100 mm x height 1200 mm / including the cue, the pieces cut at the straight ends, parallel edging, the ends at the packages painted with alkyd paint for protection against cracks.